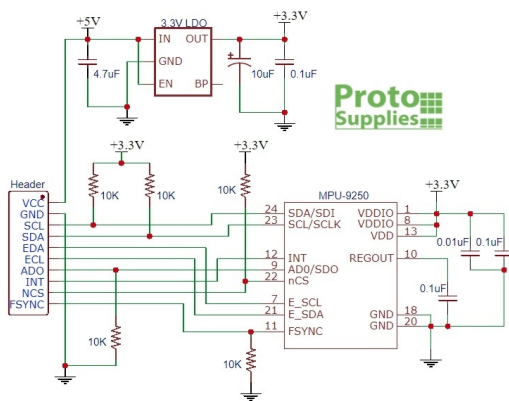
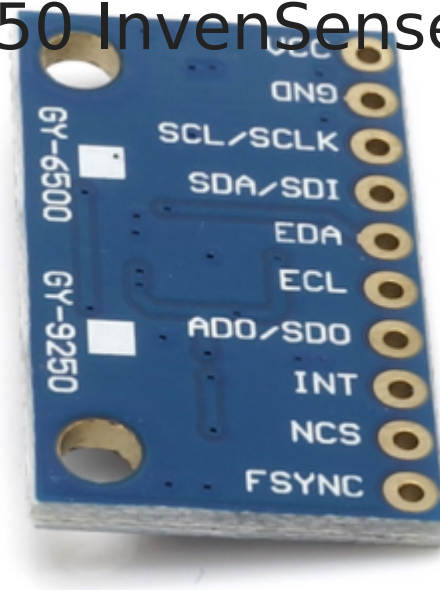
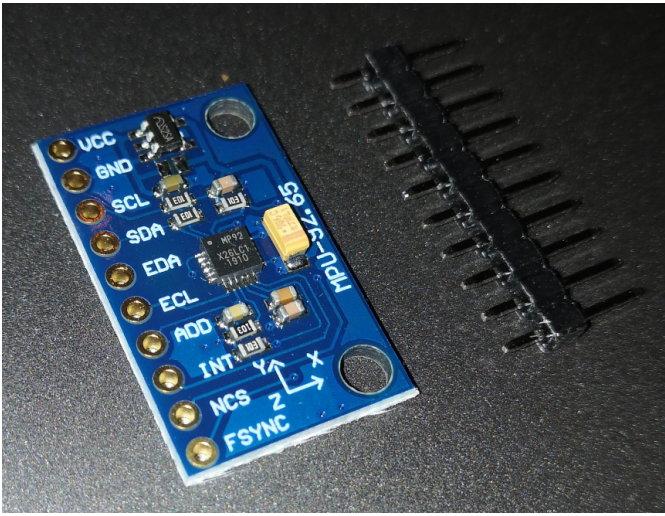


Effector (mover) | Inertial Measurement Unit MPU 9250 / GY-250 InvenSense



<https://wiki.stadtfabrikanten.org/pdfjs/web/viewer.html?file=https://wiki.stadtfabrikanten.org/attachments/135>

<https://wiki.stadtfabrikanten.org/pdfjs/web/viewer.html?file=https://wiki.stadtfabrikanten.org/attachments/136>

Features

- 3-axis gyroscope
- 3-axis acceleration sensor

- 3-axis magnetic field sensor (geomagnetic field/compass)
- Digital Motion Processor (DMP)

Specifications

- Three 16-bit analog-to-digital converters (ADCs) for digitizing the gyroscope outputs
- Three 16-bit ADCs for digitizing the accelerometer outputs
- Three 16-bit ADCs for digitizing the magnetometer outputs
- Gyroscope full-scale range of ± 250 , ± 500 , ± 1000 , and $\pm 2000^\circ/\text{sec}$ (dps)
- Accelerometer full-scale range of $\pm 2\text{g}$, $\pm 4\text{g}$, $\pm 8\text{g}$, and $\pm 16\text{g}$
- Magnetometer full-scale range of $\pm 4800\mu\text{T}$
- I2C and SPI serial interfaces
- Power supply: 3-5v
- Board Dimensions: 25. x 15.4mm, 3mm mounting holes

Used wiring address

- 0x68

keywords

- MPU
- IMU
- AHRS
- gyrometer
- accelerometer
- magnetometer

Version #1

Erstellt: 2026-06-07 23:06:19 CEST von Mario Voigt

Zuletzt aktualisiert: 2026-06-07 23:07:20 CEST von Mario Voigt