

# FabLab Chemnitz

- [Layer Clip](#)
- [About/Upgrade MightyScape](#)
- [Table Support](#)
- [Open Extension Directory](#)
- [Reload](#)
- [PathOps](#)
- [Simple Inkscape \(Interface\)](#)
- [Ray Tracing](#)

# Layer Clip

- Original idea from <http://www.pernsteiner.org/inkscape/layerclip/>
- Ported to Inkscape 1.0 by <https://gitlab.com/jczapla79/inkscape-extension-layer-clip>
- Fixed and ported to Inkscape 1.2+ by Mario Voigt

## Usage

[See an example with screenshots](#)

1. Clip containing layer
  - Select a single object and then run this extension to set that object as the clip path for the layer that contains it.
  - This will mark the layer with "(c\*)" to indicate that the layer contains an object that is being used to clip its containing layer, and with "(C)" to indicate that the layer has a clip path applied to it. (These markers are simply added to the layer name to make it easier to tell when clip paths are in use.)
2. Clip layer above
  - Like "Clip containing layer", but sets the object as the clip path for the layer above the one that contains it
  - The layer containing the object will be marked with "(c+)" (instead of "(c\*)" for "Clip containing layer").
3. Clip layer below
  - Like "Clip containing layer", but on the layer below the layer containing the selected object.
  - Marks the object's layer with "(c-)".
4. Clip parent layer
  - Like "Clip containing layer", but on the parent layer of the layer containing the selected object.
  - Marks the object's layer with "(c\*\*)".
5. Remove layer clip
  - Select an object in a clipped layer and then run this extension to remove the clip path from a layer.
  - The "(C)" marker will also be removed, if one is present.
  - The marker on the layer that held the actual clip path will not be removed, but you can remove it yourself by manually editing the layer name.

## 6. Reset clippath transforms

- If you move an object that is being used as a clip path for a layer, the layer will still be clipped based on the old position. Run this extension to fix the problem.

# About/Upgrade MightyScape

# Table Support

- Source: <https://sourceforge.net/projects/inkscape-tables/files/>
- Updated to be compatible with Inkscape 1.2+
- The functions "Duplicate Table" and "Fit Guides" options were removed due to defectness

## Possible actions to perform

- Create
- Add
  - Columns
  - Rows
  - Guide Lines
- Edit
  - Selected cells text
  - Selected columns width
  - Selected rows height
  - Selected table width and height
- Fit
  - Selected table to page
  - Selected table to page width
  - Selected table to page height
- Merge cells
  - Merge selected cells
  - Split selected cells
- Remove
  - Selected columns
  - Selected rows

The number of columns:

2

−

+

The number of rows:

2

−

+

The width of the cell:

100mm

The height of the cell:

20mm

VERY IMPORTANT: You will notice that the newly created table does not contain text. In order to edit any cell's text, just select the cell and then from the Extensions menu select Table -> Edit -> Selected cells text

☐ Live preview

Close

Apply

	1		
	S		
	4		



# Open Extension Directory

Just what it says to be! ... Opens the MightyScape main folder (Lächeln)



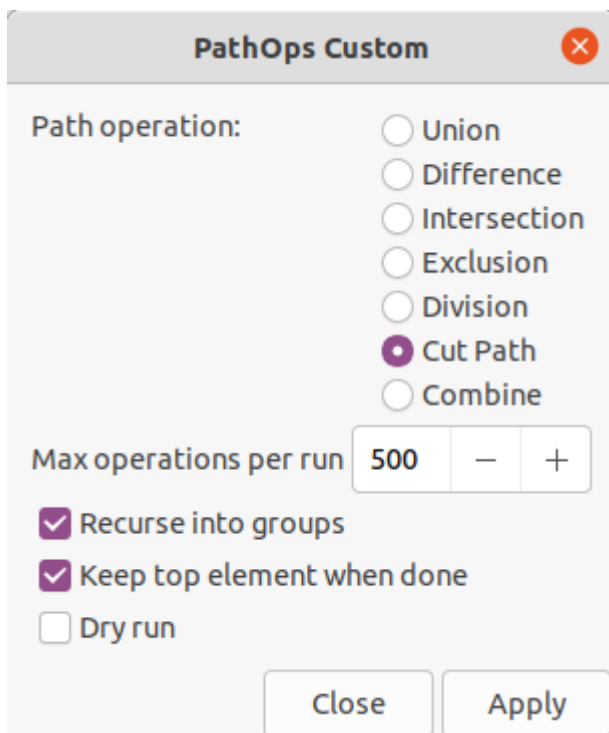
# Reload

An extension which allows to reload the drawing in case of any change without opening the file in a new window. Helpful if the file is opened and changes in background by another instance of Inkscape or any routine which processes and overwrites it in the meantime.

# PathOps

A tool suite to run boolean operations multiple times, like Combine, Cut Path, Division, Exclusion, Intersection, Difference, Union. This extension takes a selection of one or more groups, or of several elements (paths, shapes, text), or a mix of both, and applies a chosen path operation with the top-most valid object in paint order and each other valid object which is part of the selection (directly or as member of a processed group) that is lower in Z-order. Objects which are considered "valid" for path operations are paths, shapes and text. Other graphic elements like clones or bitmap images are silently ignored.

More info about the usage can be found at [https://gitlab.com/moini\\_ink/inx-pathops](https://gitlab.com/moini_ink/inx-pathops)



The screenshot shows a dialog box titled "PathOps Custom" with a close button (red circle with an 'x') in the top right corner. The dialog contains the following controls:

- Path operation:** A group of radio buttons with the following options:
  - ☐ Union
  - ☐ Difference
  - ☐ Intersection
  - ☐ Exclusion
  - ☐ Division
  - ☒ Cut Path
  - ☐ Combine
- Max operations per run:** A numeric input field containing "500", with minus and plus buttons on either side.
- Recurse into groups:** A checked checkbox.
- Keep top element when done:** A checked checkbox.
- Dry run:** An unchecked checkbox.
- Buttons:** "Close" and "Apply" buttons at the bottom right.

# Simple Inkscape (Interface)

Source: <https://inkscape.org/~Mr.Raven/%E2%98%85simpleinkscapev01+2>

Original description:

“This extension changes the Inkscape interface into a simpler one.

It hides quite some elements from the menus and toolbars so that a more basic version of the interface remains. This can be useful for educational purposes. It is very easy to use and you can always go back to the default Inkscape user interface.

After installing the extension, you restart Inkscape, open the menu 'Extensions', submenu 'Interface' and then 'Simple Inkscape'. It explains itself.

This extension was made in collaboration with @Kirstie, one of the users of the Inkscape forum and writer of a very good Dutch book about Inkscape. She made the changes to the ui, I made the extension that installs or removes them.

There are two forum topics about this extension.

<https://inkscape.org/forums/extensions/simple-inkscape-what-items-do-we-want/>

<https://inkscape.org/forums/extensions/simple-inkscape-extension-children-education-learning-simplified-user-interface/>

It works in Windows and Linux for Inkscape 1.0 and above.

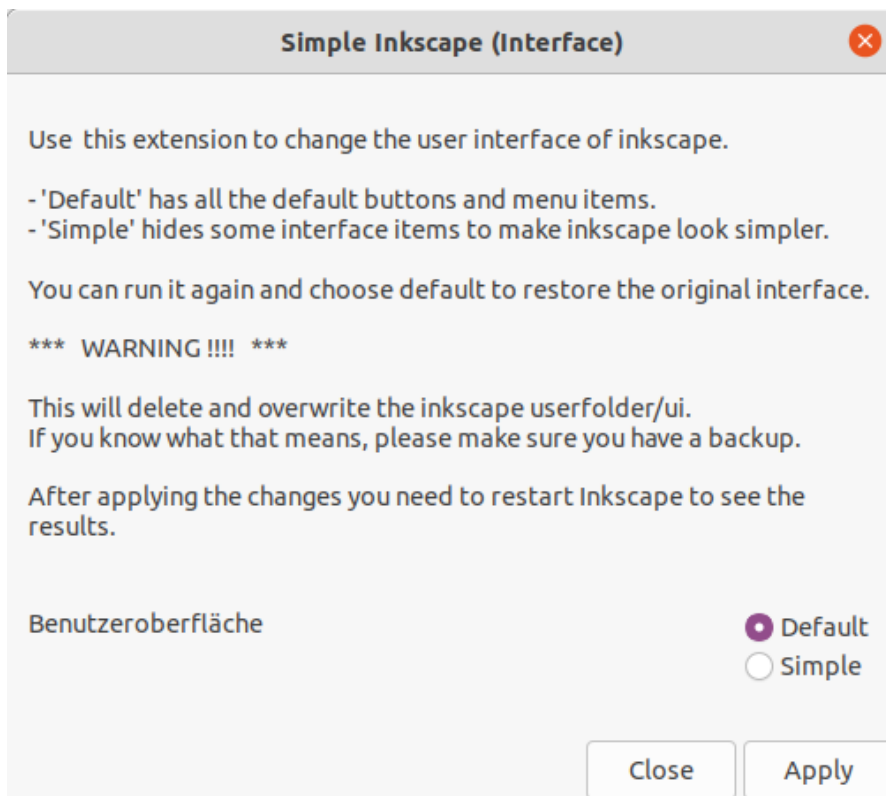
Lower versions of Inkscape will not work.

Mac is currently not supported since I have no Mac to test it on. It will simply give an error message on Mac. If anyone who has a Mac wants to help me test it, I believe I can make it work for Mac as well. Please

contact me if you want to help me with it.

If you have questions - please feel free to ask.

I would also be interested to know if the extension is used and what it is used for so that I can keep that in mind for future versions. So if use it - leave a post if you like.



# Ray Tracing

Sources:

Ray Tracing - Insert Lens Opt... x

Focal length:

100,000

-

+

mm ▾

Diameter:

1,000

-

+

In ▾

Edge thickness:

2,000

-

+

mm ▾

Optical index:

1,5168

-

+

Lens type:

Plano-concave/convex ▾

☐ Vorschau

Schließen

Anwenden

E2%98%85ray-optics

kscope-raytracing

Ray Tracing - Set Lens Ma... x

Select material:

Mirror ▾

Optical index:

1,5168

-

+

☐ Vorschau

Schließen

Anwenden

