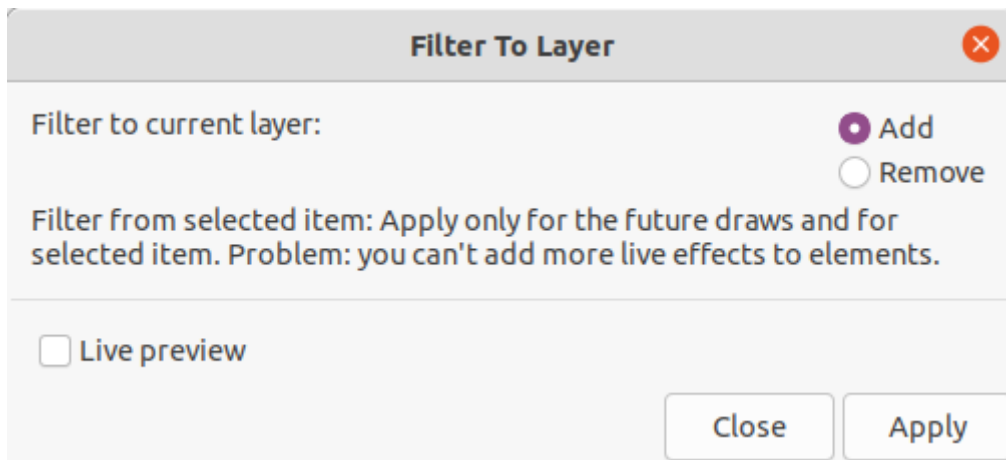
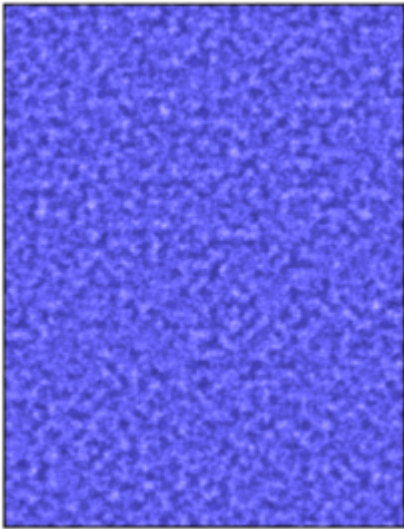


Filter To Layer

Source: <https://inkscape.org/~jabiertxof/%E2%98%85filter-layer>



Draw some object and and apply some filter



Check the XML structure

XML Editor

```
<svg:svg id="svg51619">
  <sodipodi:namedview id="namedview51621">
    <svg:defs id="defs51616">
      <svg:filter id="filter51794" inkscape:label="Film Grain">
        <svg:g id="layer1" inkscape:label="Layer 1">
```

Click to select nodes, drag to rearrange.

| | Name | Value |
|---|--------------------|---------|
| ⊗ | id | layer1 |
| ⊗ | inkscape:groupmode | layer |
| ⊗ | inkscape:label | Layer 1 |

Run the extension and get results

"Filter to current layer" → choose "add"

Click to select nodes, **drag** to rearrange.

| | Name | Value |
|---|--------------------|--------------------------|
| ⊖ | style | filter:url(#filter51794) |
| ⊖ | id | layer1 |
| ⊖ | inkscape:groupmode | layer |
| ⊖ | inkscape:label | Layer 1 |

The layer got some new attribute "style" with filter:url content

Version #1

Erstellt: 2025-05-24 16:54:21 CEST von Mario Voigt

Zuletzt aktualisiert: 2025-05-24 16:55:25 CEST von Mario Voigt