

Dimensioning/Measuring

- [Colorize Path Lengths / Slants](#)
- [Dimensioning \(Replaced by LPE\)](#)
- [Shirt Waist \(Sara May Allington\)](#)
- [Show Path Coordinates](#)

Colorize Path Lengths / Slants

This tool will help to identify paths of certain lengths to maybe delete or modify them.

Please also see [Filter By Length/Area](#) which behaves similar but non-visual.

Colorize Path Lengths [X]

Selection: Length_selection
 Slant_selection

Len1: red < (px) 12,0

Len2: green < = 25,0

Len3: greenyellow < = 40,0

Len4: skyblue < = 60,0

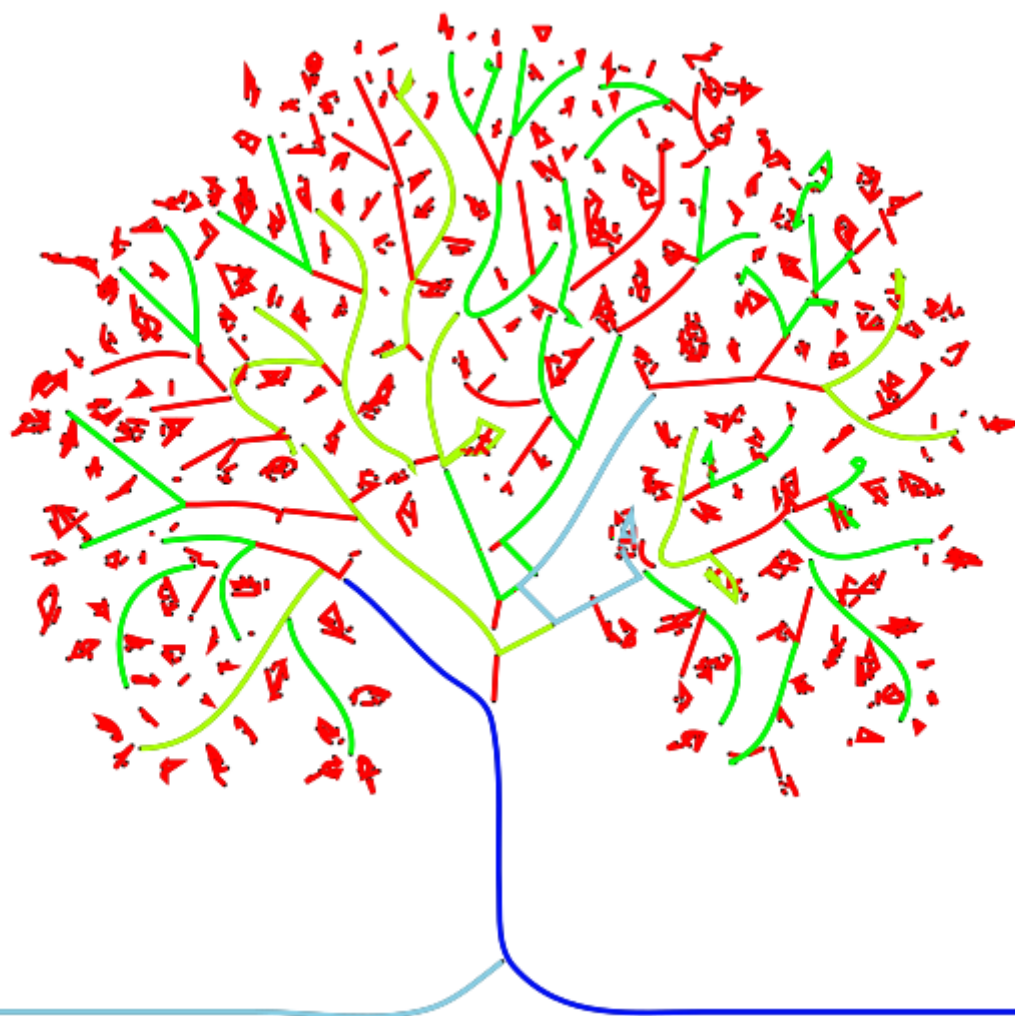
Len5: blue > 60,0

hor: red < (H/W) 0,1

ver: blue > 10,0

Live preview

Example output (left original, right is extension result)



Dimensioning (Replaced by LPE)

General Settings Annotation Help

Orientation
 horizontal
 vertical
 parallel

Orientation of the arrows
 auto
 inside
 outside

Line scale factor: 1,0

Helpline overlap: 5,0

Helpline distance: 0,0

Position: 10,0

Flip side:

Live preview

Close Apply

General Settings Annotation Help

Scalefactor (1:#: 1,0

Units px

Precision 0

Rotate Annotation

Live preview

Close Apply

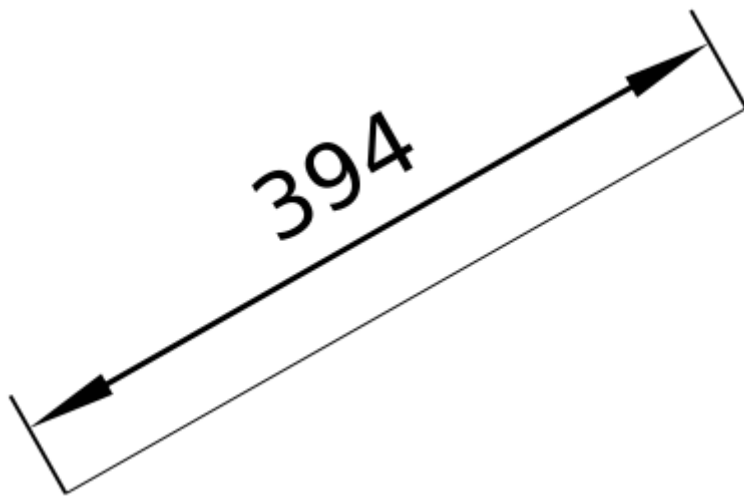
Dimensioning

General Settings Annotation Help

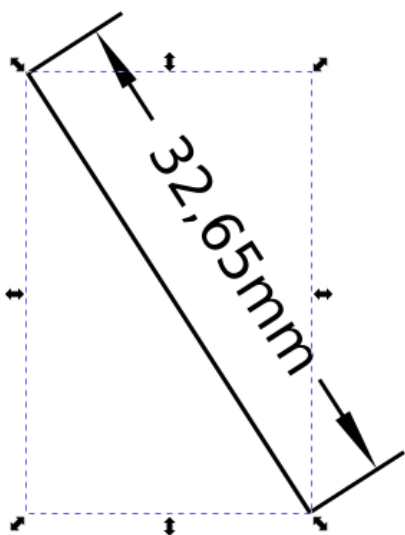
This tool draws beautiful DIN-Style dimensioning arrows. Draw a path. The dimensioning will go from the start point to the end point of the path.

Live preview

Close Apply



We can use the same feature by Live Path Effect:



Software interface showing the 'Bemaßungen' (Dimensions) panel. The panel includes tabs for 'Allgemein', 'Projektion', 'Optionen', and 'Hilfe'. The 'Allgemein' tab is active, displaying various settings for dimensioning:

- Einheit: mm
- Ausrichtung: Parallel
- Schrift: Sans Regular 10
- Zusammenfassen ab (°): 0
- Position: 5,00
- Position der Beschriftung: 0,00
- Abstand Endmarkierungen: 0,00
- Verlängerung Endmarkierungen: 2,00
- Linienstärke: 0,25
- Skalieren: 1,0000

Additional options are listed at the bottom:

- Pfeile außen
- Seite wechseln
- Skalierung berücksichtigen
- Beschriftungen drehen
- Keine Linie unter Beschriftung
- Überlappende Beschriftungen verhindern

Shirt Waist (Sara May Allington)

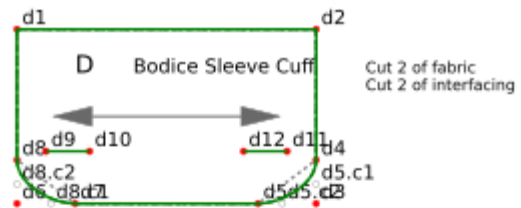
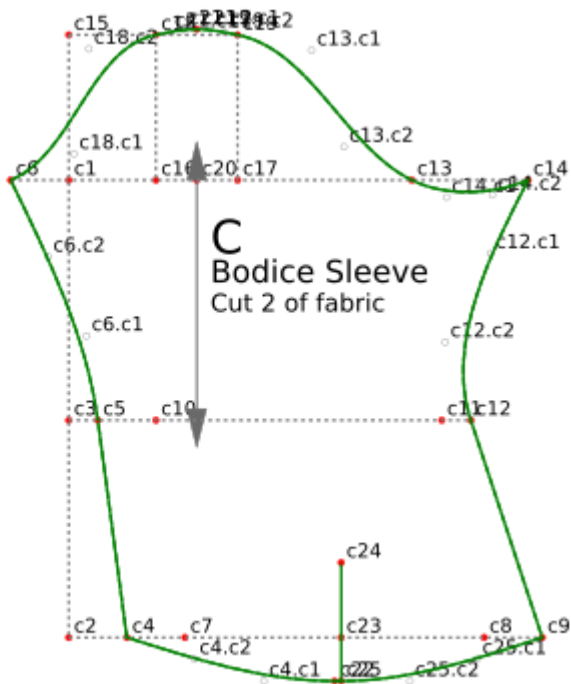
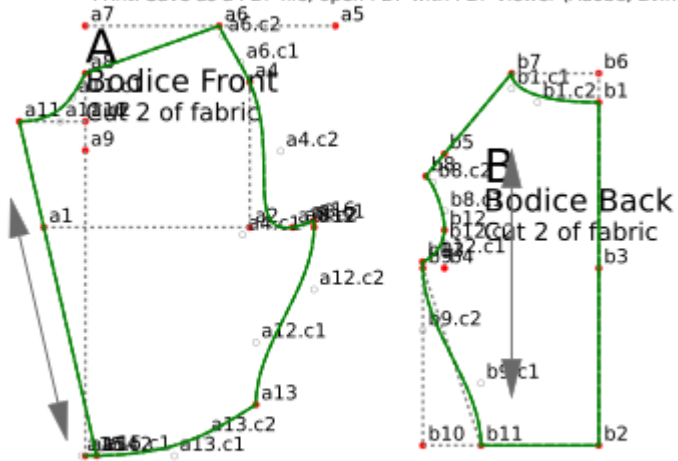
Shirt Waist (Sara May Allington) ×

Select measurement: Inches Centimeters

Front Waist Length	15,0
Back Waist Length	15,5
Neck Circumference	13,5
Bust Circumference	39,0
Waist Circumference	25,0
Armscye Circumference	15,0
Across Back	13,5
Side	7,8
Upper Front Height	10,8
Overarm Length	20,0
Elbow height - from wrist to elbow	9,5
Elbow Circumference	12,5
Hand Circumference	8,0

Live preview

Define Seam Allowances: Select File/Inkscape Preferences/Steps and set Outset to 56.25px (5/8" seam allowance)
 Create Seam Allowances: Press CTRL-F, type "cuttingline" in the ID field, click the Find button, press CTRL-)
 Remove Points & Gridlines: Press CTRL-F, type "reference" in the Attribute field, click Find button, press DELETE
 Print: Save as a PDF file, open PDF with PDF viewer (Adobe, Evince, Okular, xPDF), print from Print Preview option



Find/Replace (Ctrl+F) [Close] [Cancel]

Find:

Replace:

Search in

Text

Properties

Scope

All

Current layer

Selection

Options

General

Case sensitive

Exact match

Include hidden

Include locked

Properties

ID

Style

Font

Attribute value

Attribute name

Object types

All types

Paths

Texts

Groups

Clones

Images

Offsets

Rectangles

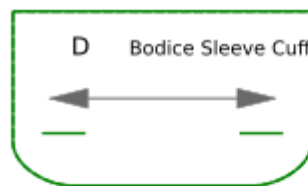
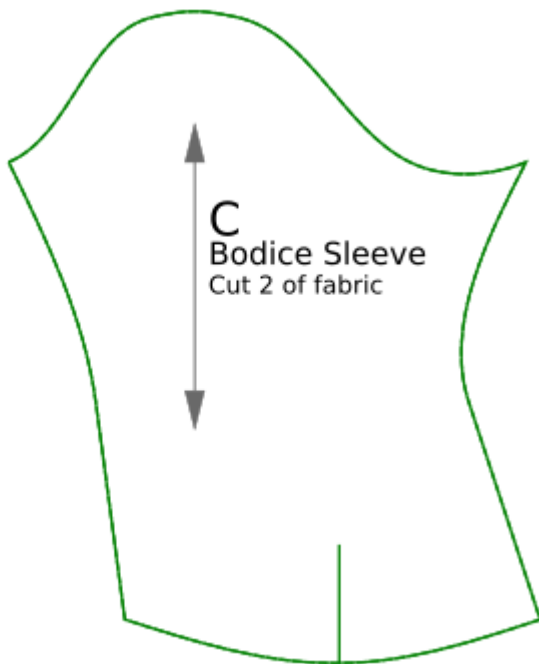
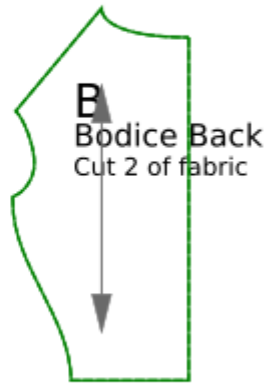
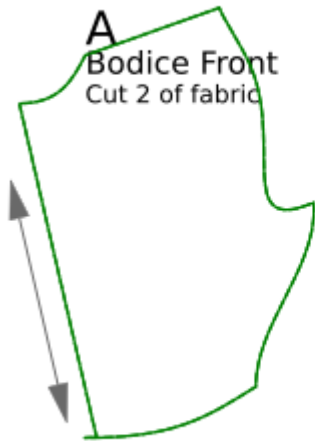
Ellipses

Stars

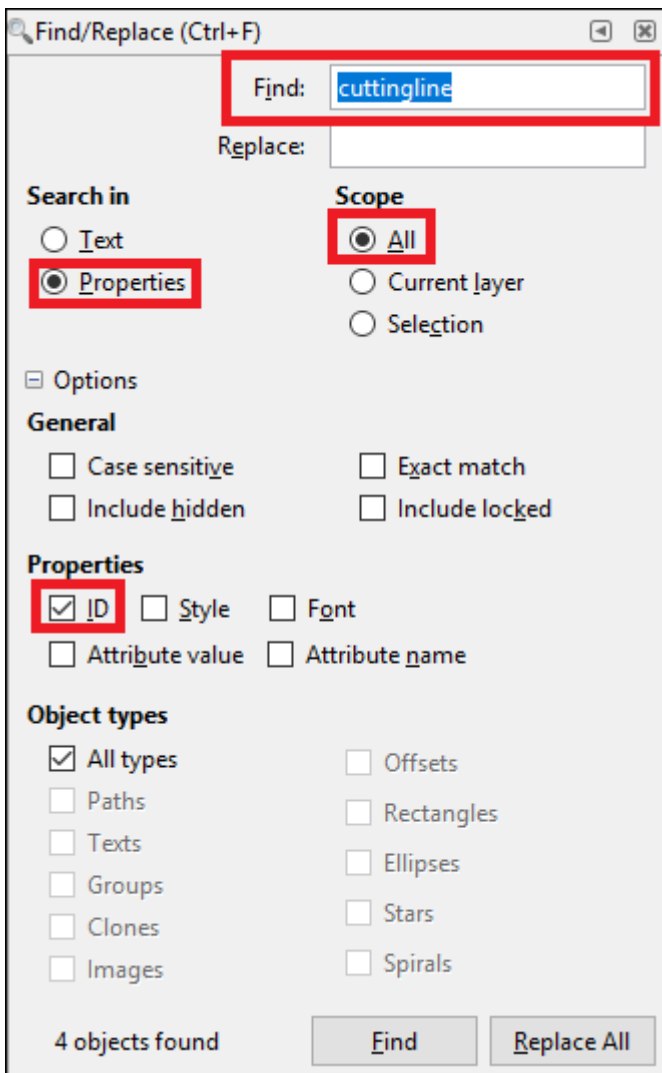
Spirals

224 objects found



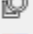






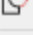









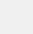
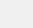
Define Seam Allowances: Select File/Inkscape Preferences/Steps and set Outset to 56.25px (5/8" seam allowance)
Create Seam Allowances: Press CTRL-F, type "cuttingline" in the ID field, click the Find button, press CTRL-)
Remove Points & Gridlines: Press CTRL-F, type "reference" in the Attribute field, click Find button, press DELETE
Print: Save as a PDF file, open PDF with PDF viewer (Adobe, Evince, Okular, xPDF), print from Print Preview option



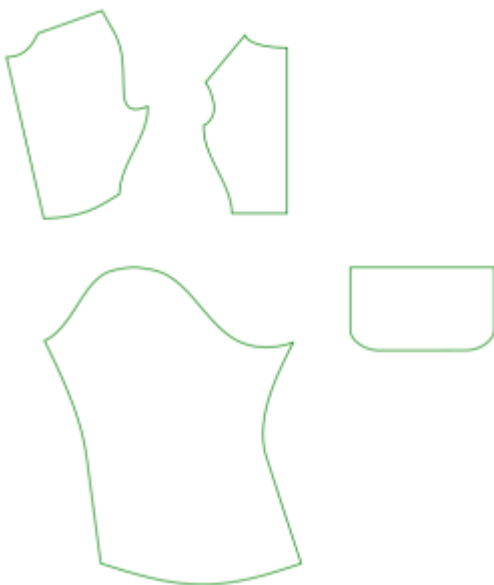
Cut 2 of fabric
Cut 2 of interfacing



Outline the cutting lines → Ctrl +)

Path	Text	Filters	Extensions	Help
 Object to Path				Shift+Ctrl+C
 Stroke to Path				Ctrl+Alt+C
 Trace Bitmap...				Shift+Alt+B
 Trace Pixel Art...				
 Union				Ctrl++
 Difference				Ctrl+-
 Intersection				Ctrl+*
 Exclusion				Ctrl+^
 Division				Ctrl+/
 Cut Path				Ctrl+Alt+/
 Combine				Ctrl+K
 Break Apart				Shift+Ctrl+K
 Inset				Ctrl+(
 Outset				Ctrl+)
 Dynamic Offset				Ctrl+J
 Linked Offset				
 Simplify				Ctrl+L
 Reverse				
 Path Effects ...				Shift+Ctrl+7
 Paste Path Effect				Ctrl+7
 Remove Path Effect				

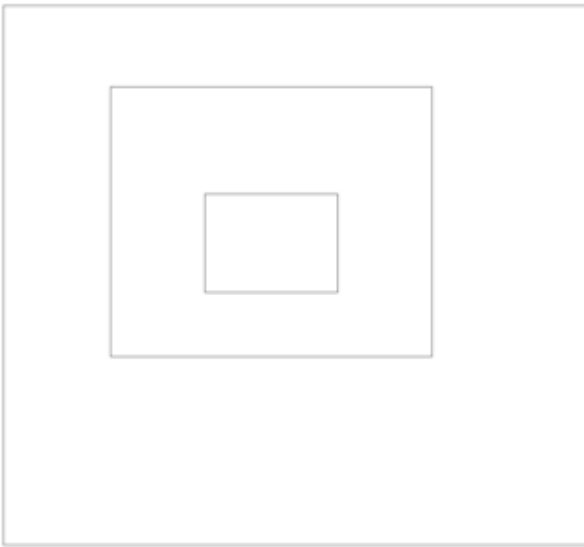
Move the outlines next to the current selection to see the solid lines



Show Path Coordinates

This extension prints X,Y coordinates of selected path nodes. Can be helpful for debugging things.

Draw some path



Run extension



Inkscape has received additional data from the script executed. The script did not return an error, but this may indicate the results will not be as expected.

68.791664	93.648804
92.226187	93.648804
92.226187	111.03571
68.791664	111.03571
68.791664	93.648804
52.160713	74.75
108.85714	74.75
108.85714	122.375
52.160713	122.375
52.160713	74.75
33.261906	60.386906
136.07142	60.386906
136.07142	155.63691
33.261906	155.63691
33.261906	60.386906

OK