

# Polygen

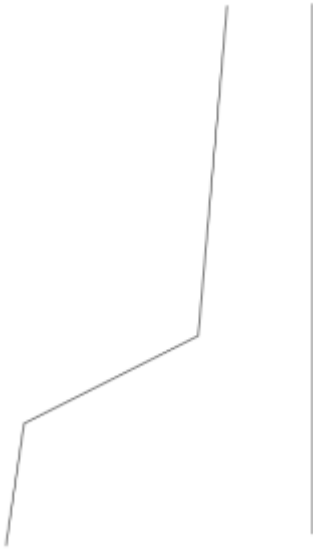
Source: <https://github.com/obzerving/Polygen>

More info:

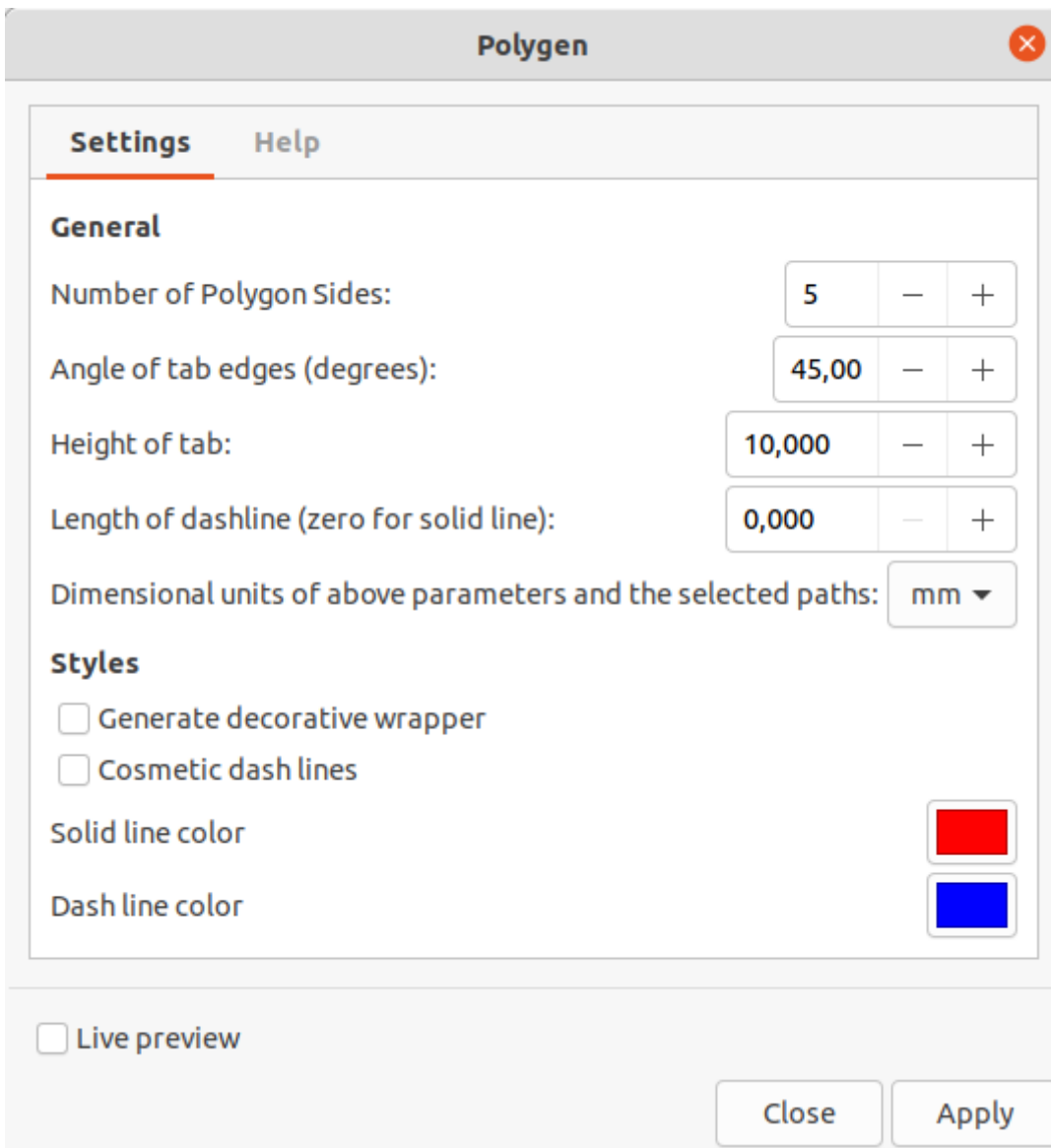
[https://raw.githubusercontent.com/obzerving/Polygen/main/How\\_to\\_Use\\_Polygen.pdf](https://raw.githubusercontent.com/obzerving/Polygen/main/How_to_Use_Polygen.pdf)

## Draw target path

Draw your "silhouette" path and the centerline about which you want it to revolve. This must be an **open** polyline

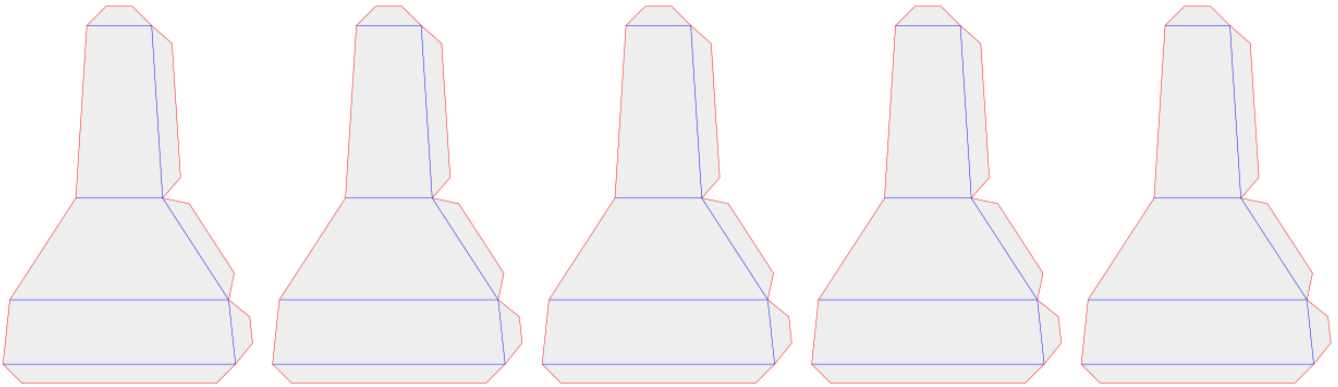
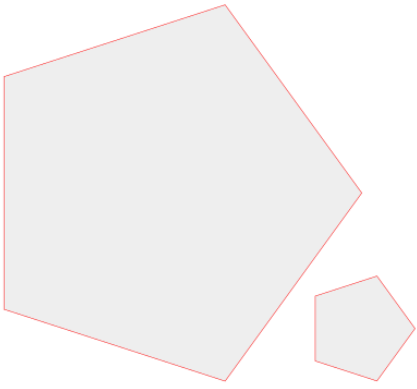


Run the extension



## Get the result

You need to duplicate the surfaces yourself



---

Version #2

Erstellt: 2025-05-24 14:58:59 CEST von Mario Voigt

Zuletzt aktualisiert: 2025-05-24 14:59:57 CEST von Mario Voigt