


Leather Case

A Inkscape extension to generate the pieces for a leather case that can be laser cut. The leather case is intended to be used with up to 5 mobile phones.

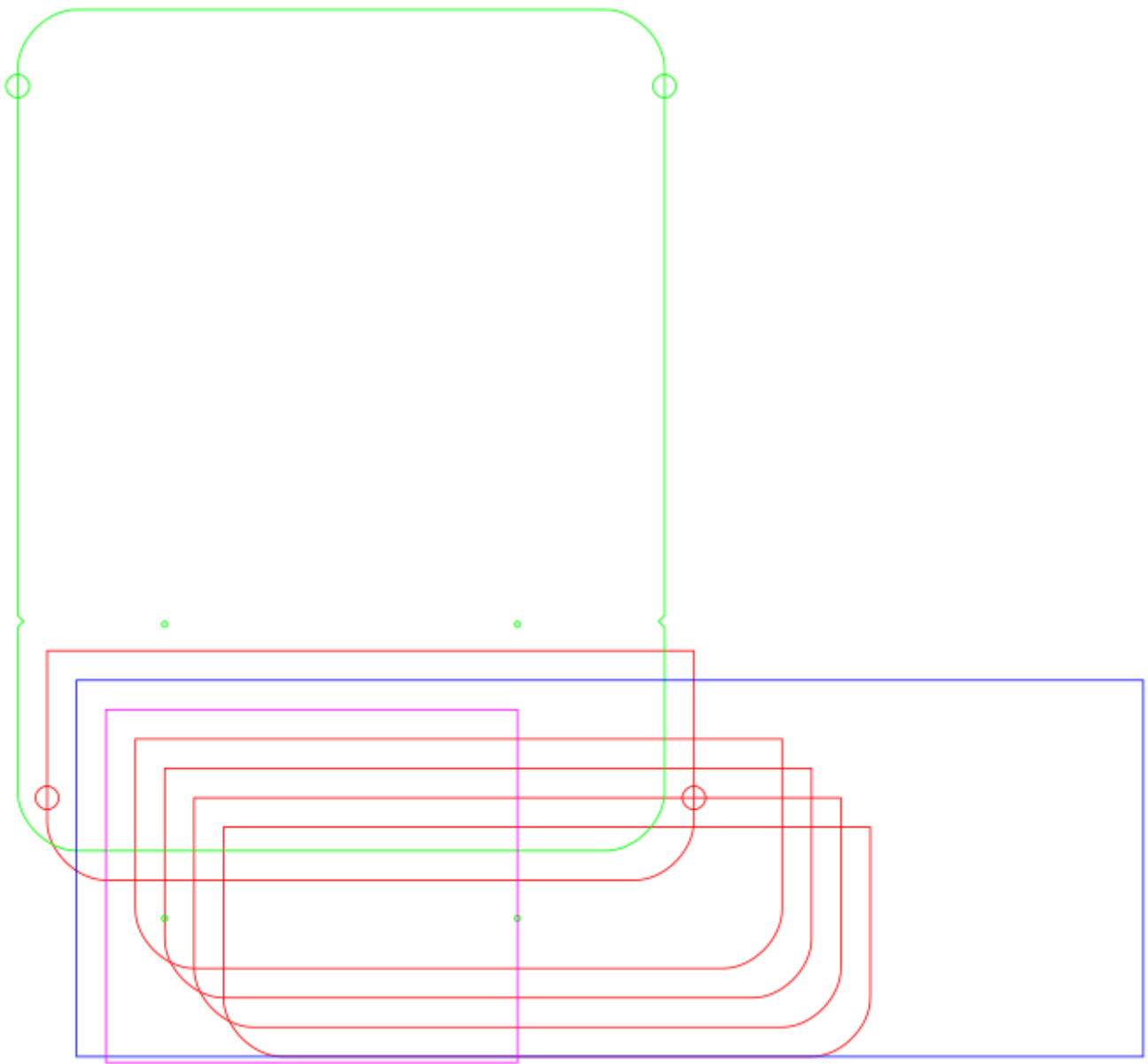
 Leather Case ×

Width (mm)	<input type="text" value="40,0"/>
Height (mm)	<input type="text" value="90,0"/>
Depth (mm)	<input type="text" value="10,0"/>
Height Margin (mm)	<input type="text" value="10,0"/>
Corner Roundness (mm)	<input type="text" value="10,0"/>
Divisions	<input type="text" value="5"/>
Number of Clasps	<input type="text" value="2"/>
Extra Tongue Length (mm)	<input type="text" value="10,0"/>
Tip Tongue Length (mm)	<input type="text" value="40,0"/>
Extra Edge Width (mm)	<input type="text" value="10,0"/>
<input checked="" type="checkbox"/> Make Holes	
<input type="checkbox"/> Group Objects	

☐ Live preview

Close

Apply



Actually it's the job to find out how this looks alike in reality.

Version #1

Erstellt: 24 Mai 2025 14:53:35 von Mario Voigt

Zuletzt aktualisiert: 24 Mai 2025 14:53:57 von Mario Voigt