

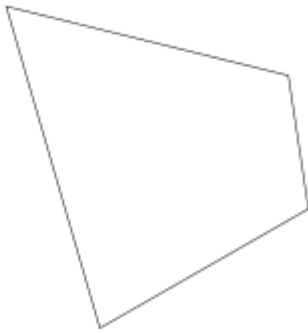
Extruder

Source: <https://github.com/obzerving/Extruderz>

Inkscape extension that generates paper model of an extruded shape

Given a closed path of straight lines, this program generates a paper model of (1) another copy of the closed path; (2) an extrusion (or more if it exceeds the maximum length) represented by a strip with tabs and score lines; and (3) strips for covering the tabbed strips. See the file [How to use extruder.pdf](#) for details. [Inkscape 1.1 Papercraft Extruder Extension from Installation to Design Space](#) is a video tutorial on using the extension.

Draw some polygon (closed polyline)



Run the extension

Extruder

Settings Help

General

Width of extrusion: 50,00 - +

Maximum length of extrusion: 1500,00 - +

Angle of tab edges (degrees): 45,00 - +

Height of tab: 5,000 - +


Length of dashline (zero for solid line): 0,000 - +


Dimensional units: mm ▾

Styles

Generate decorative wrapper

Cosmetic dash lines

Solid line color 

Dash line color 

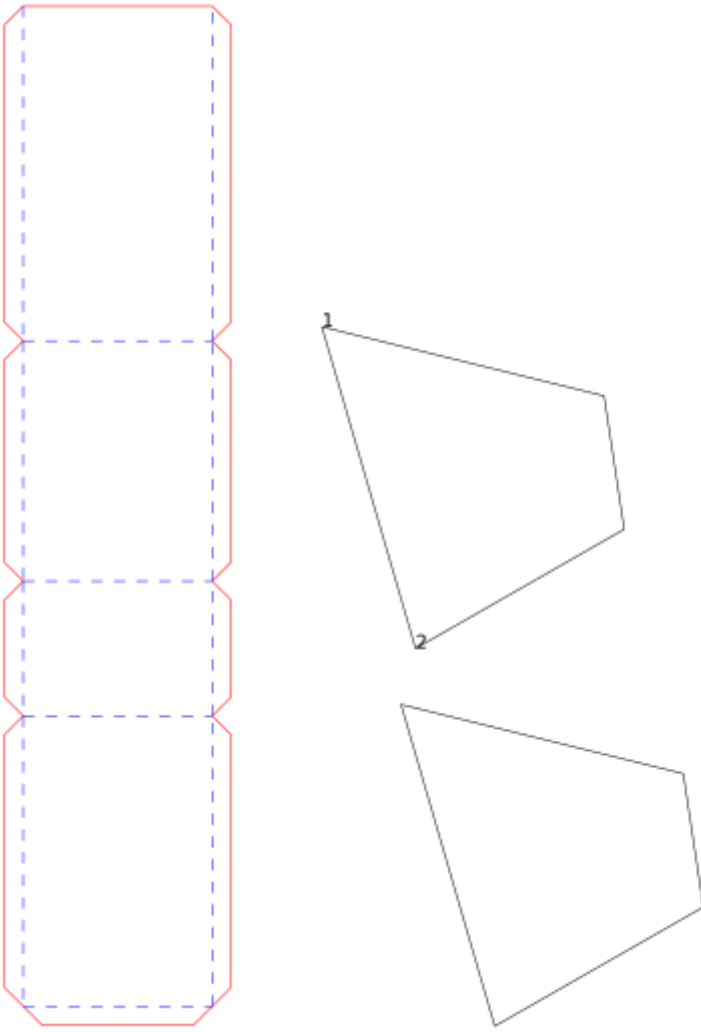
Other settings

Print debug info

Live preview

Close Apply

Get the result



See also

- [Unwind Paths](#)
- [Tab Generator](#)
- [Collar](#)

Version #2

Erstellt: 2025-05-24 14:52:23 CEST von Mario Voigt

Zuletzt aktualisiert: 2025-05-30 10:57:14 CEST von Mario Voigt