

# DXF 2 Papercraft

DXF 2 Papercraft is a small Inkscape wrapper for [dxf2papercraft](#)

Documentation page: <https://dxf2papercraft.sourceforge.net>

We can use [Purge Duplicate Path Segments](#) to remove duplicate lines to cleanup the generated output.

Tested to work with DXF version "R12 Binary DXF". You can use [ODA File Converter](#) to convert down to this older format. See [DXF/DWG Importer](#) for some hints.

DXF 2 Papercraft

Unfolding settings

☐ No merging of faces into single polygon

☐ Print face numbers (labels)

☒ Draw each face separate

☒ Allow overlapping faces in cut-out sheet

☐ Hide glue tabs

☐ Force glue tabs, even if intersecting faces

Comma separated list of face numbers to disconnect from the rest1,15

Generation strategyDraw smallest polygon first

General

☒ Resize the canvas to the imported drawing's bounding box

Add extra border around fitted canvas10,000-+

Border offset unitsmm

Manual scale factor1,000-+

Input File

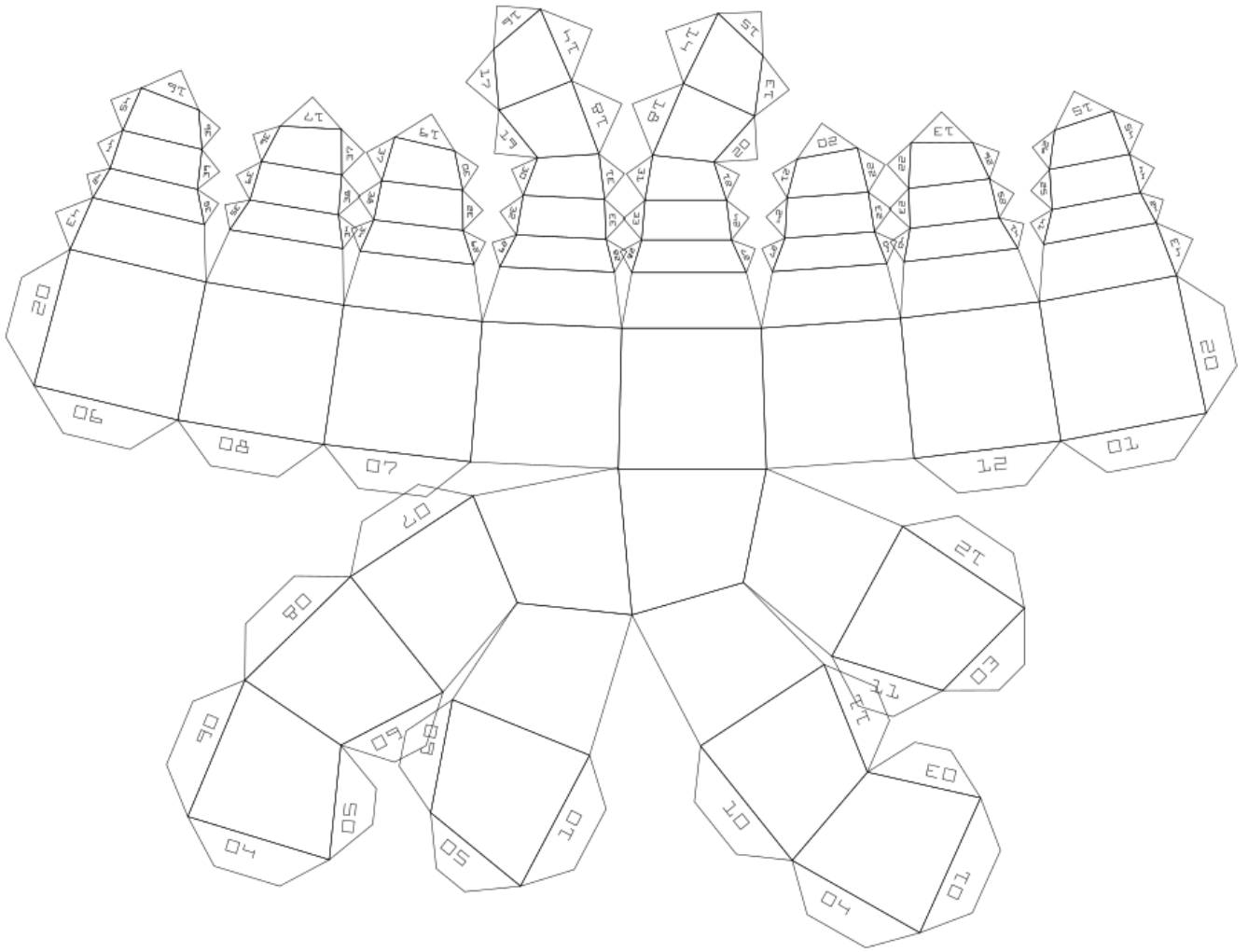
/home/tomate/testfiles/icosphere.dxf...

DXF 2 Papercraft Wrapper by Mario Voigt / Stadtfabrikanten e.V. (2020)  
<https://fablabchemnitz.de>  
Wrapper License: GNU GPL v3  
Modules:  
<http://dxf2papercraft.sourceforge.net>  
<http://kabeja.sourceforge.net>

☐ Live preview

CloseApply

Example Output



Version #6

Erstellt: 24 Mai 2025 14:28:55 von Mario Voigt

Zuletzt aktualisiert: 2 Juni 2025 17:53:20 von Mario Voigt