

Collar

Source: <https://github.com/obzerving/Collarz>

Collar

Settings Help

General

Number of Polygon Sides: - +

Size of Polygon 1 (in Dimensional Units): - +

Size of Polygon 2 (in Dimensional Units): - +

Height of Collar (in Dimensional Units): - +

Number of parts to divide collar into: - +

Angle of tab edges (degrees): - +

Height of tab (in Dimensional Units): - +

Length of dashline(zero for solid line) (in Dimensional Units): - +

Dimensional units: ▾

Styles

Generate decorative wrapper

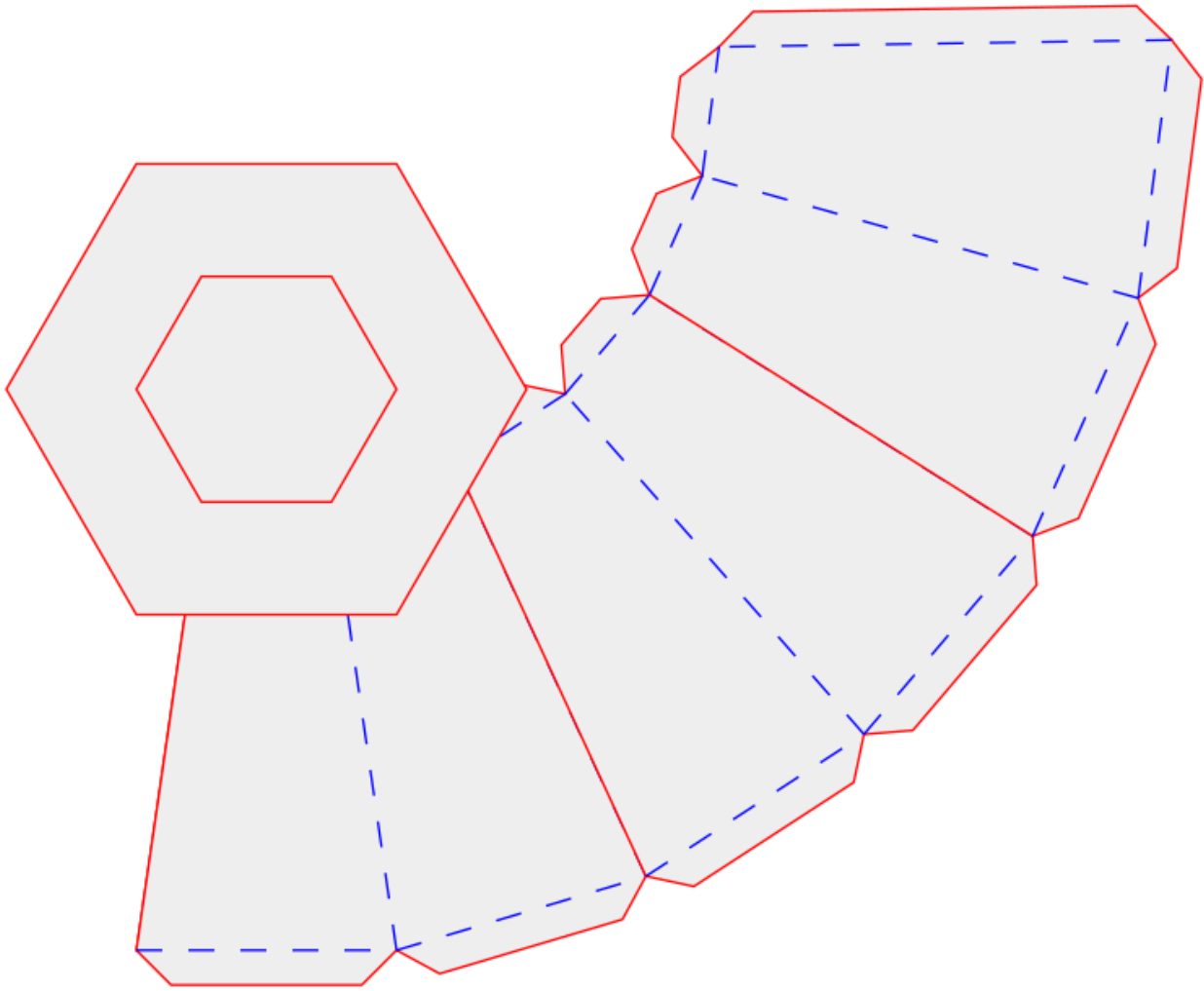
Cosmetic dash lines

Solid line color

Dash line color

Live preview

Close Apply



The Collar extension can be used by papercrafters to design a truncated regular polygon. The user inputs the number of sides for the overall polygon shape, the width of the "collar" at the top and at the bottom, and also the height of the collar.

The output of the program provides the side, top and bottom pieces—with gluing tabs where needed—as well as untabbed pieces that are used for cutting the decorative/wrapper paper to cover the outside of the object

More details: https://github.com/obzerving/Collarz/blob/main/How_to_use_collarz.pdf

Version #1

Erstellt: 2025-05-24 14:51:10 CEST von Mario Voigt

Zuletzt aktualisiert: 2025-05-24 14:52:03 CEST von Mario Voigt