

# Box Maker - Living Hinge

Box Maker - Living Hinge

Hinge Type: Standard parallel slit

Unit: mm

Box Dimensions: Inside

Length: 40,000

Width: 80,000

Height: 50,000

Minimum/Preferred Tab Width: 6,00

Tab Width:  Fixed  Proportional

Material Thickness: 3,00

Kerf (cut width): 0,100

Clearance: 0,010

Layout/Style: Diagrammatic

Space Between Parts: 1,00

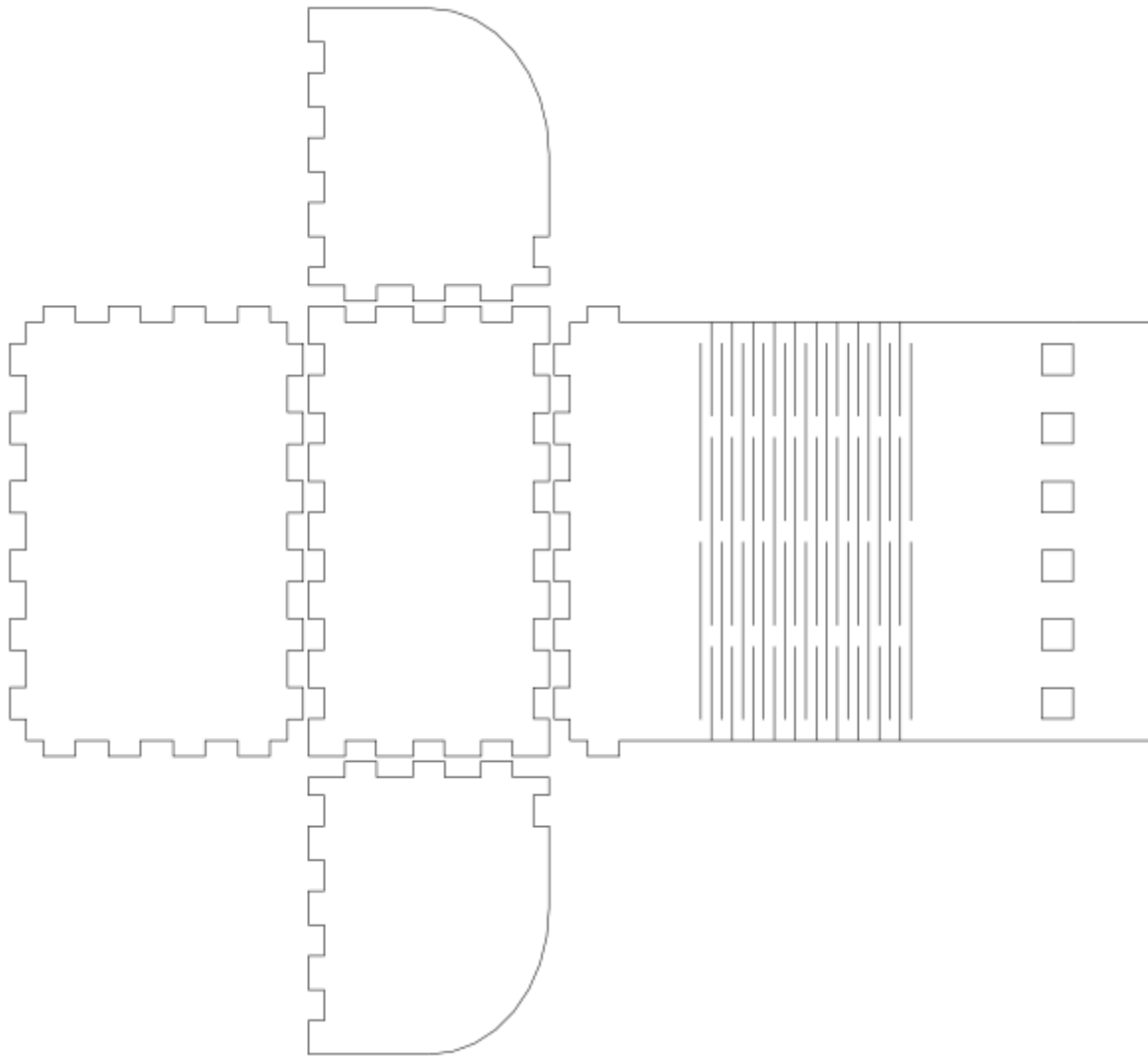
Hinge remaining wood thickness: 2,000

Lid thumb tab length (0 for no tab): 15,000

Live preview

Close Apply

[es.html](#)



See also

- [Living Hinge \(Fit To Rectangle\)](#)
- [Living Hinge \(Size Input\)](#)
- [Buxtronix Living Hinges](#)

---

Version #2

Erstellt: 2025-05-24 15:19:18 CEST von Mario Voigt

Zuletzt aktualisiert: 2025-05-30 11:39:28 CEST von Mario Voigt