

Box Maker - Lasercut Box

Box Maker - Lasercut Box

Dimensions Laser Kerf Dimples Misc

Dimensions can measure the external or internal size of the box.
The corner cubes can be omitted.
The document units should be set to mm instead of pixels
(assuming you mean to really cut it out with a laser).

Dimensions are External

Units mm

Width 80,0

Height 60,0

Depth 60,0

Material Thickness 4,00

Width Tab Count 15

Height Tab Count 15

Depth Tab Count 10

Include corners

Use half-sized tabs near corners

Live preview

Close Apply

Box Maker - Lasercut Box

Dimensions Laser Kerf Dimples Misc

The kerf is the amount lost to the burning width of the laser.
Typically in the range 0.1 to 0.4 mm. Check with your laser vendor. This will depend on the material being cut and the speed of the laser.

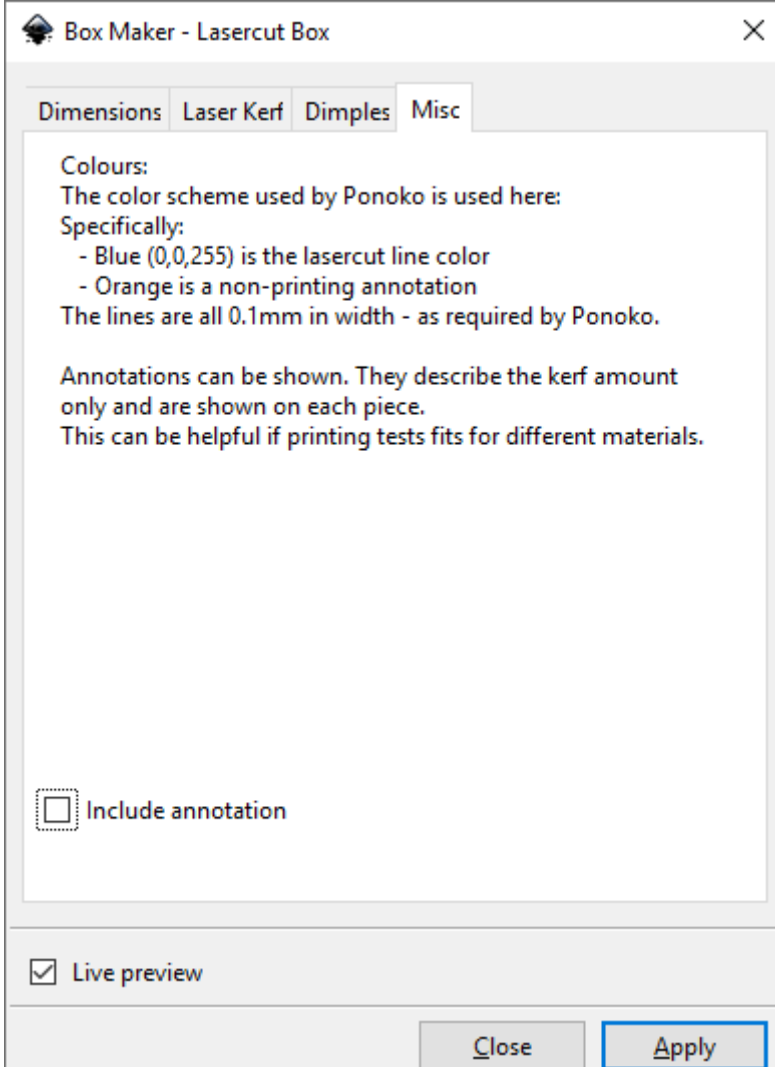
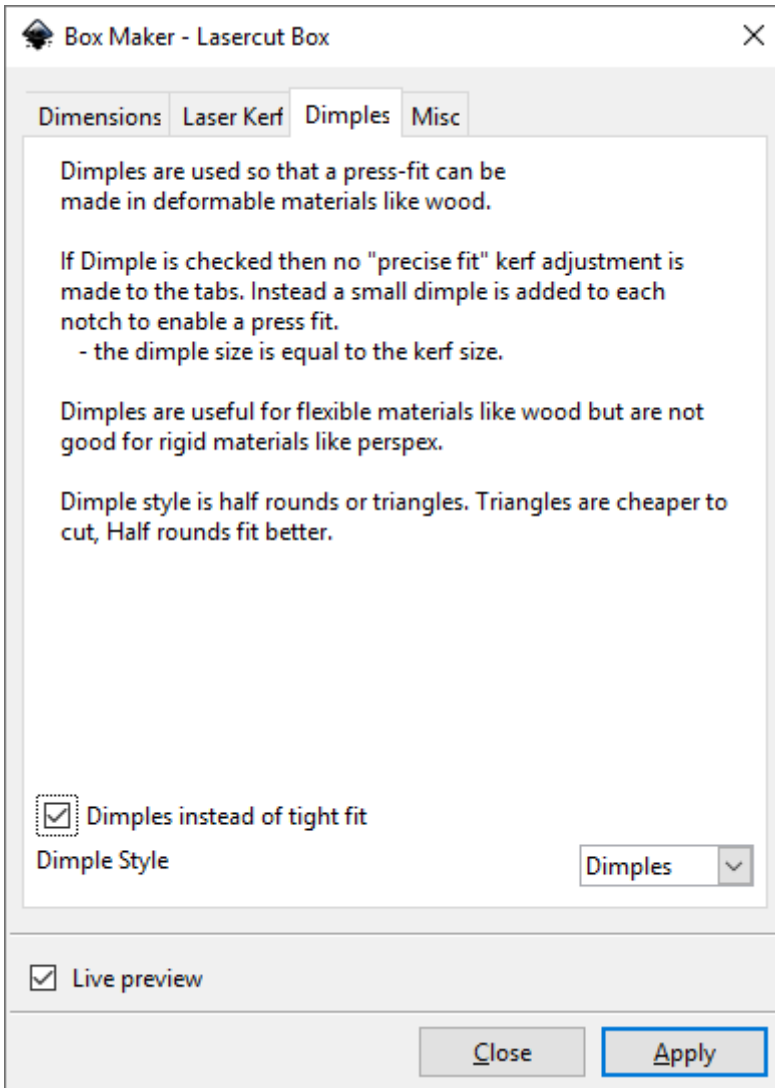
Setting the kerf to 0 will create a box that will use the least material. However the material lost to the laser will make for a loose fit and probably require glue.

If the Kerf is greater than zero then you can have a calculated "Precise fit" or add dimples for a "Press fit".
A "Precise fit" will change the width of the tabs to allow for the material burned away by the laser and make a tight fit.
Dimples will add notches for a "Press fit" (see next tab)

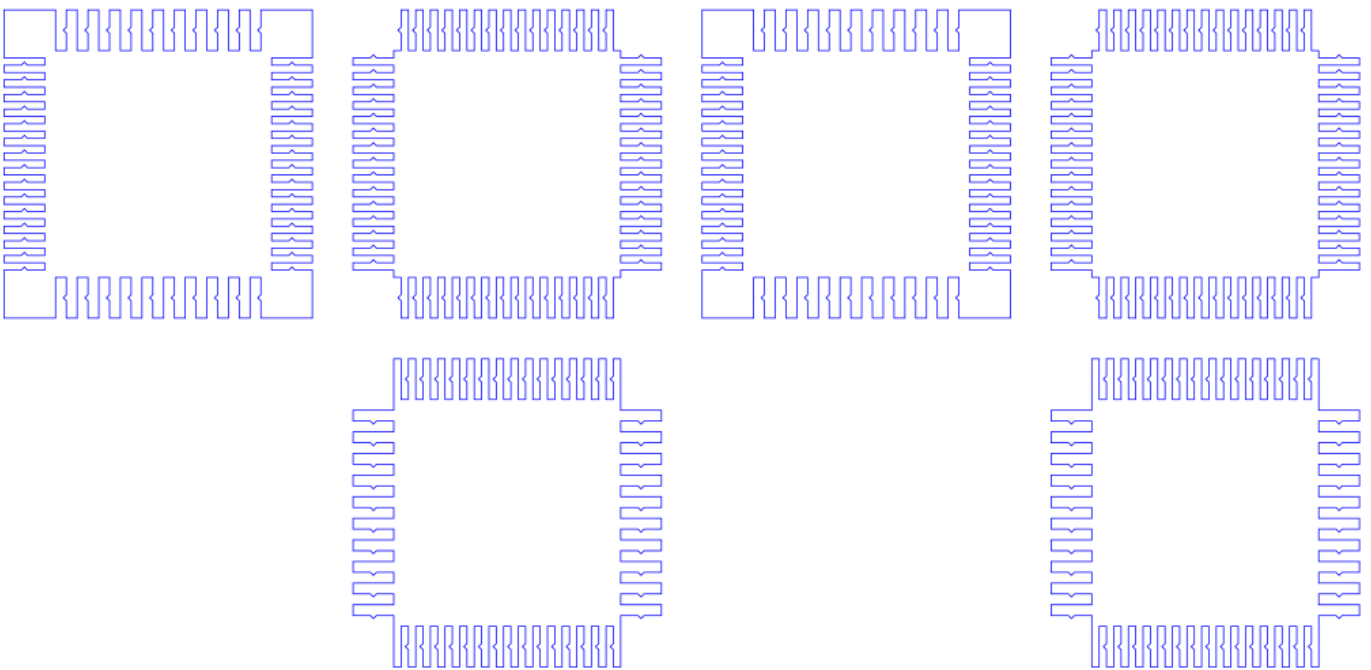
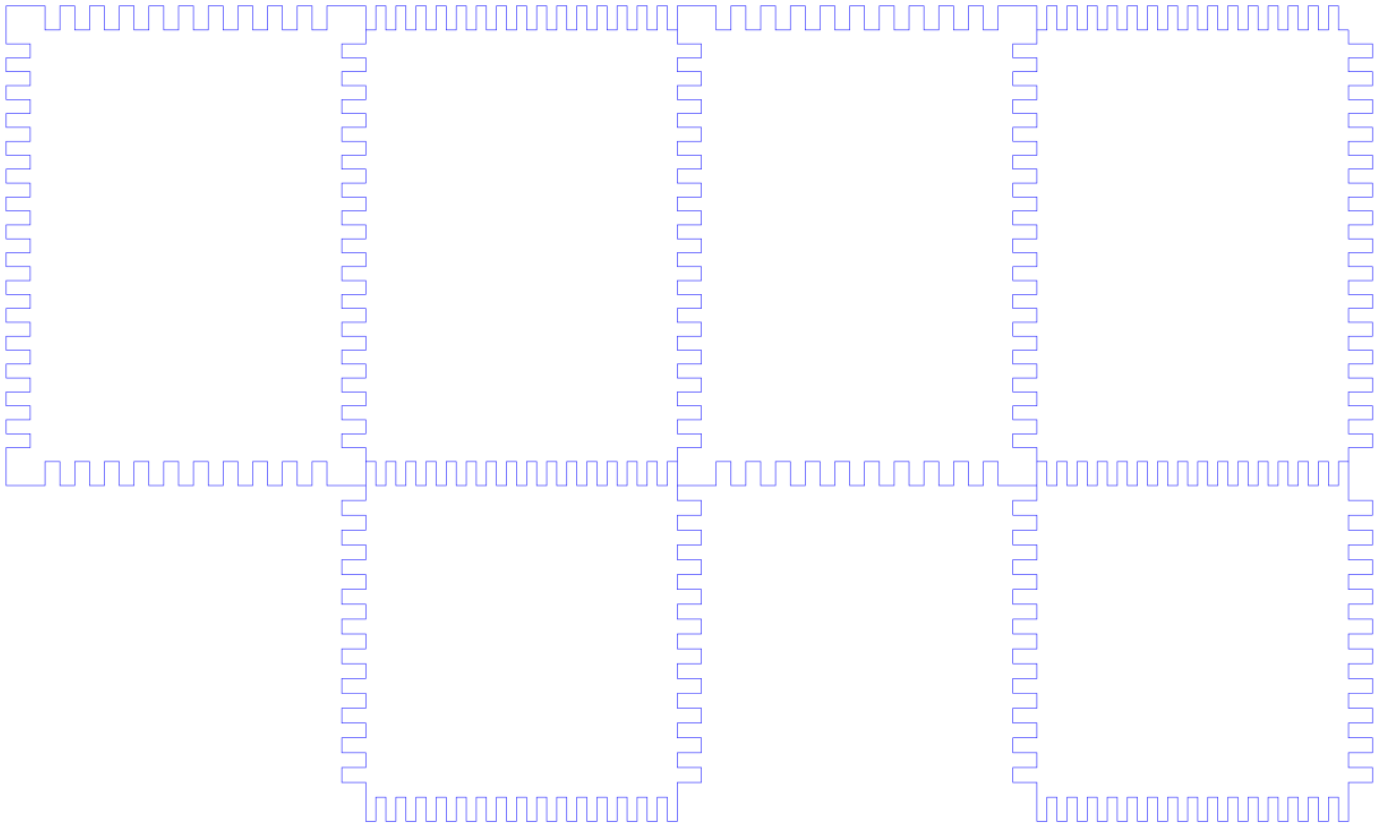
The pattern will be spread out, using more material, because a common laser cut line cannot be used.

Kerf (amount lost to laser) 0,00

Display Line width = kerf



Example Output



Version #1

Erstellt: 2025-05-24 15:18:14 CEST von Mario Voigt

Zuletzt aktualisiert: 2025-05-24 15:19:04 CEST von Mario Voigt